



GAT MONTHLY MEMBERSHIP PROGRESS REPORT

Results as of: 3/31/2023

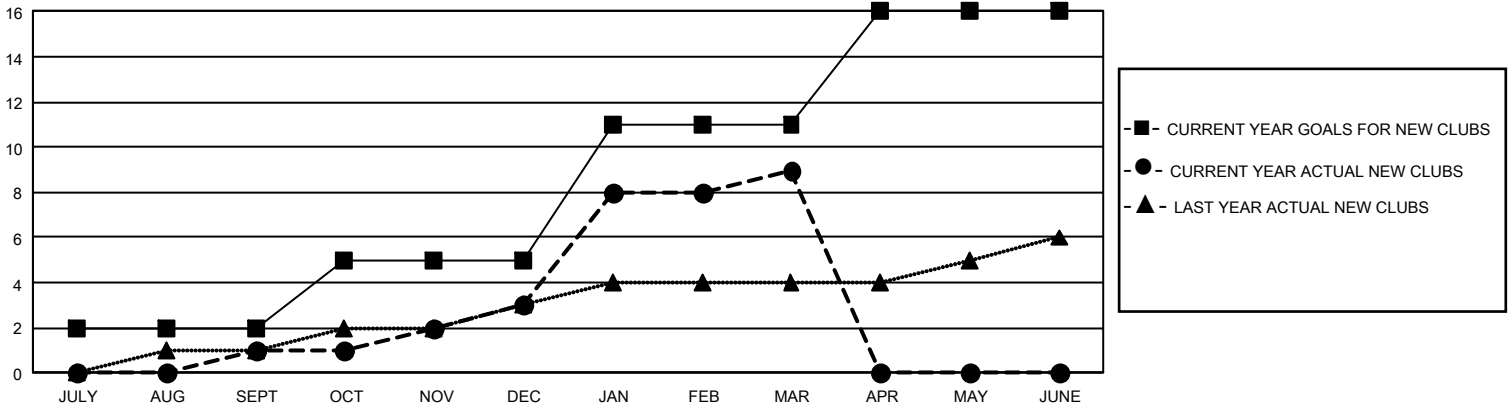
GMT Constitutional Area 4, Group C

REPORT DOES NOT INCLUDE CLUBS IN UNDISTRICTED AREAS.

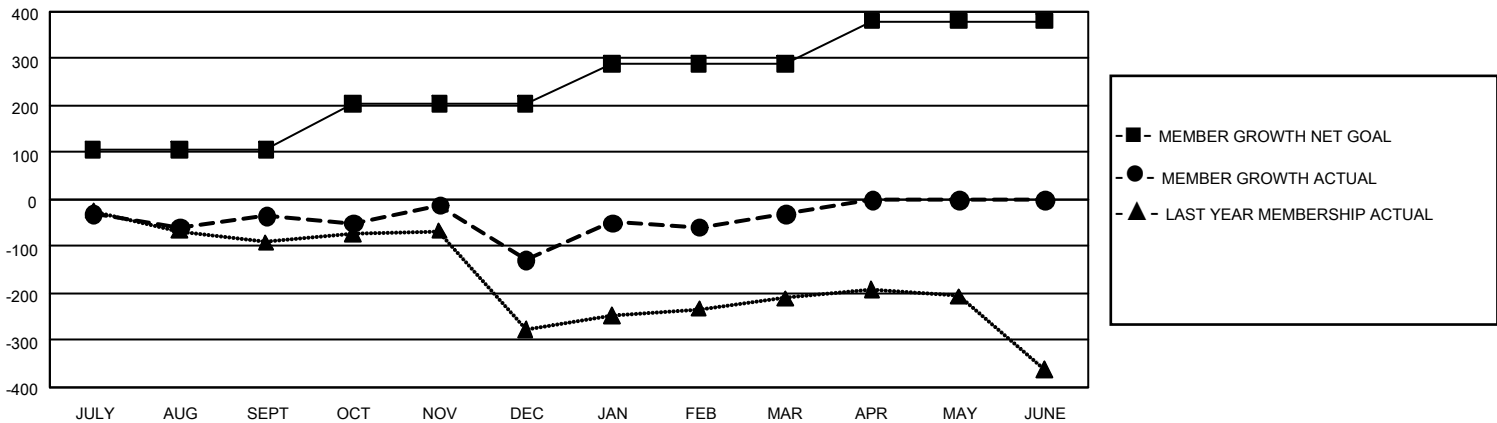
Clubs			
RESULTS FOR 2022-2023			
QUARTER	NEW CLUB GOAL	NEW CLUBS	DROPPED CLUBS
JULY/AUG/SEPT	6	1	5
OCT/NOV/DEC	9	2	5
JAN/FEB/MAR	18	6	2
APR/MAY/JUNE	15	0	0

Members			
RESULTS FOR 2022-2023			
QUARTER	MEMBER GROWTH NET GOAL	MEMBER GROWTH ACTUAL	DROPPED MEMBERS ACTUAL (including transfers)
JULY/AUG/SEPT	106	171	151
OCT/NOV/DEC	98	189	275
JAN/FEB/MAR	86	327	206
APR/MAY/JUNE	90	0	0

GOALS AND ACTUAL NEW CLUBS CUMULATIVE



GOALS AND ACTUAL MEMBERS CUMULATIVE



DROPPED CLUBS: 12	155 CLUBS OF 422 ADDED 1 OR MORE NEW MEMBERS	GENDER DISTRIBUTION	
		MALE 4,511 (53.95%) FEMALE 3,846 (46.00%) NON BINARY 0 (0.00%) PREFER NOT TO ANSWER 4 (0.05%)	
DROPPED MEMBERS		CLICK HERE FOR CUMULATIVE MEMBERSHIP DATA	TOTAL FAMILY UNIT MEMBERS 998
DECEASED 30 CLUB CANCELLED 124 OTHER 478 TOTAL 632	FAMILY MEMBERS PAYING HALF DUES 603		